

PTV OBD Vehicle Tracking System Installation

Unit Installation

The PTV OBD vehicle tracker simply plugs into the OBDII port underneath the steering wheel. A zip-tie is included in the kit to securely seat the device onto the OBDII port plug. This helps keep the unit from coming disconnected due to vibration on rough roads or from someone unplugging the device. The device does have an internal battery and will send an alert any time the device may be unplugged (Power Loss Alert).



Power Up the Monitor

Initial “Power Up” Sequence

The vehicle will need to be outdoors for the installation process in order for the monitor to receive a GPS signal.

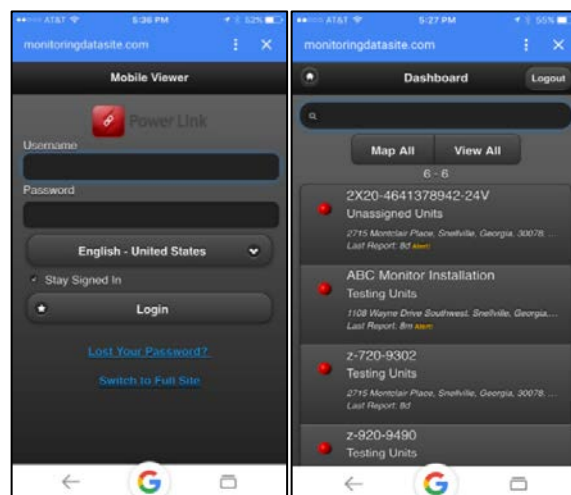
Start the vehicle and let the vehicle run. The unit will go through an initial “boot up” sequence.

Connection “Handshake” Acknowledgement

This next step is to confirm that the monitor and the platform make their initial “handshake”. The vehicle must be outdoors in order for the GPS signal to lock in and complete the “handshake”. The confirmation can be accomplished via the Power Link Mobile Viewer on your smart phone or on a computer connected to the internet.

Mobile Viewer Smart Phone Connection

Open your internet browser and go to www.monitoringdatasite.com. You should see the Power Link Mobile Viewer log in screen. Enter your User Name and Password, then select Login. If you see the unit that you just installed listed on the mobile viewer, the handshake is complete.

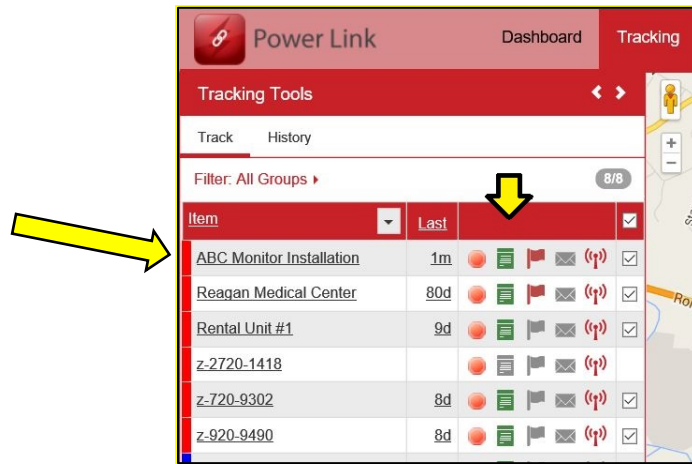


If you do not see the unit listed, turn off the ignition and then restart the vehicle again. If you still do not see the unit listed after a few minutes, call our technical support team at 678-992-5501 for troubleshooting assistance.

Computer Internet Connection:

Open your internet browser and go to www.monitoringdatasite.com. You should see the Power Link log in screen. Enter User Name and Password, then select Login.

Select the Tracking tab. You will see the unit listed (list is sorted alphabetically). Once the unit has completed the initial “handshake” with the user interface, the Session Info Icon will change from gray to green. If the session info icon is green, the “handshake” is complete and you will see the vehicle on the tracking map.



If the icon is gray, turn off the ignition and then restart the vehicle again. If icon does not turn green and you see the unit on the tracking map after a few minutes, call our technical support team at 678-992-5501 for troubleshooting assistance.

If the monitor is properly communicating, that’s it...you are all set. Should you have any questions or need any assistance, please contact our technical support team at 678-992-5501. We appreciate your business!

Power Telematics, Inc.

3100 Breckinridge Blvd. Suite 145 | Duluth, GA 30096

Phone 678-992-5501

Email info@powertelematics.com | www.powertelematics.com