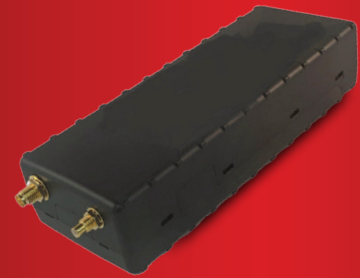


PT350

Stationary Generator Monitoring System

The PT350 generator monitoring system is a full featured solution for ANY stationary residential, commercial, or industrial generator. The PT350 is installed on the generator set, inside the enclosure. This monitor includes a custom wiring harness that can be installed on any brand/make/model generator and has four (4) programmable bias inputs and two (2) analog inputs. These inputs are used to monitor additional alarm conditions from the generator controller and work in conjunction with our optional accessory kits. This system is equipped with a multi-carrier modem to connect to the best available network in the area and has an external 8db high gain cellular antenna. All generator events are logged and reported to the Power Link online portal. Best of all, the PT Series monitors are backed by a lifetime warranty.



➔ **Recommended Applications:**

Any residential, commercial, and industrial generators.

All PT Series monitoring systems track a set of standard conditions from each generator set including:

- Generator On/Running
- Generator Off/Stopped
- Exercise Tracking (Weekly, Biweekly, and Monthly)
- Failed to Exercise Alarm
- Battery Level Monitoring
- Low Battery Alarm
- Extended Run Time Alerts for 4, 8, 12, and 24+ Hours
- Engine Hours Tracking
- Daily Generator Status Checks

The PT Series monitoring systems include a set of digital inputs used to monitor additional alarm conditions from the generator controller and work in conjunction with our optional accessory kits. Depending on the controller the monitor is connected to, these inputs can be programmed to track alarms including, but not limited to:

- Common Fault
- Common Warning/Pre-Alarms
- Low Fuel Level
- Generator Switch Not in Auto/Switch in Auto
- Low Coolant Level
- Low Coolant Temperature
- High Engine Temperature
- Low Oil Pressure
- Over Speed
- Over Crank
- Fuel Leak Detected
- & Many More!

PT350 Features

- External 8db High Gain Cellular Antenna
- Multi-Carrier Modem & Connection
- Over-The-Air Unit Configuration and Updates
- Custom Wiring Harness Equipped with:
 - Battery + & - Leads
 - Ignition Lead
 - 4 Digital Inputs w/ 4 Ground Leads
 - 2 Analog Input
 - 3 Relay Driver Outputs
- Internal 1000mAh Lithium Ion Battery
- Remote Start/Stop Capable

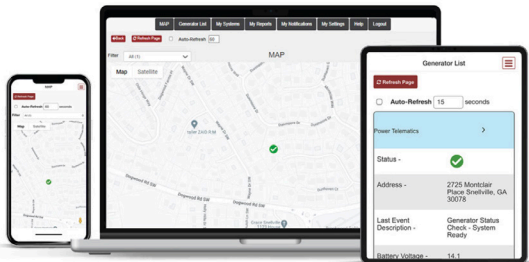
Specifications

- **Dimensions:** 5.7 x 2.1 x 1.3" (145 x 53 x 33mm)
- **Weight:** 5 oz (142g)
- **Operating Voltage:** 7-32VDC
- **Operating Temperature:** -30° to 75°C
- **Status LEDs:** GPS (Green) and Cellular (Amber/Orange)
- **Mount:** Inside the generator enclosure, Mounting bracket and screws
- **Humidity:** 95% RH @ 50°C non-condensing
- **Shock and Vibration:** U.S. Military Standards 202G and 810F, SAE J1455
- **EMC/EMI:** SAE J1113; FCC-Part 15B; Industry Canada RoHS Compliant

PT350

Stationary Generator Monitoring System

User Interface: Power Link



Power Link is your online tool for keeping up to date with generator status, activity, readiness and more. Dive into the generator history, create reports, and manage alert notifications all from your desktop or mobile phone. Power Link has a downloadable app so you can check in at any time.

Accessory Kits

Power Telematics also offers optional accessory kits to complete and customize your monitoring experience.

Kits include:

Utility Voltage Detection Kit

This sensor is used to detect the presence of utility AC voltage. The sensor is placed on an insulated conductor supplying utility AC voltage to the control panel, battery charger or block heater. Designed to sense only ONE phase of AC voltage.

Additional Conditions Monitored:

- Utility Power On
- Utility Power Off
- Building Power On
- Building Power Off
- Site Without Power (If paired with the Generator Current Sensor)

Generator Voltage Detection Kit

This sensor is used to detect the presence of generator voltage when the generator is running. The sensor is placed on the output side of the generator breaker.

Additional Conditions Monitored:

- Generator Breaker Open
- Generator Voltage Detected

Generator Current Sensing Kit

This sensor is used to detect if current is present or “flowing” from the generator set. The sensor is installed/clamped on either side of the main line circuit breaker. If current is present, then the generator is supplying load to the building.

Additional Conditions Monitored:

- On Generator Power
- Return to Utility Power
- Site Without Power (if paired with the utility voltage detection kit)

Diesel Fuel Level Monitoring

The Ultrasonic Diesel Fuel Level Sensor is a programmable plug and play device used for diesel tanks. Using ultrasonic waves, this sensor measures fuel level for tanks up to 7’ reporting fuel level from 0-100%. Standard kit comes in 30’ cable length.

Provides Alerts for:

- Fuel Level Below 50%, 25% or 10%

LP Fuel Level Monitoring

The LP Tank Fuel Level monitor measures the propane fuel level in any above ground or below ground LP tank. The monitor connects to any “Remote Ready” fuel level gauge and measures the percentage of fuel in the tank. We also stock replacement remote ready gauges for older tanks. Low fuel level alerts can be customized for different levels and email notifications can even be sent to the customer’s propane supplier.



678-992-5501 | sales@powertelematics.com

powertelematics.com

3025 Breckinridge Blvd, Ste 130, Duluth, GA 30096