

PTV-OBDM

Vehicle Tracking System

The PTV-OBDM vehicle tracking system is a plug and play GPS tracking solution for any vehicle with an OBDII port. The PTV-OBDM is equipped with a multi-carrier modem to connect to the best available network in the area and has an internal cellular and GPS antenna. All tracking events are logged and reported to the Power Link online portal. Best of all, the PTV Series monitors are backed by a lifetime warranty.



➔ **Recommended Applications:**
Any vehicle with an OBDII port.

All PTV Series monitoring systems track a set of standard conditions from each vehicle including:

- GPS Location Tracking (Every 60 Seconds)
- Speed Tracking with Speed Threshold Alerts
- Unit Power Loss (Tracker Disconnected)
- Odometer Reading
- After Hours Usage Tracking & Alerts
- Geofencing Capabilities

Power Telematics also offers an optional feature to further customize your tracking experience. Feature is compatible for ALL PTV Series trackers.

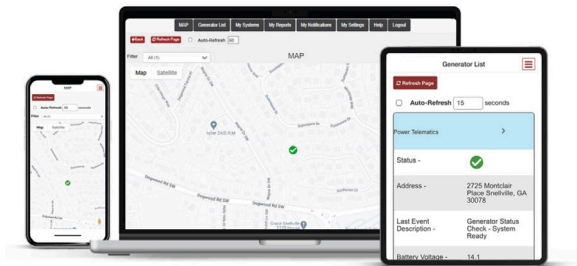
Speed Gauge

A detailed speed tracking and reporting feature. Monitors the speed tracking against the posted speed limit and provides driver behavior reports and scores.

PTV-OBDM Features

- Internal Cellular & GPS Antenna
- Multi-Carrier Modem & Connection
- Over-The-Air Unit Configuration and Updates
- Internal 200mAh Lithium Ion Battery

User Interface: Power Link



Power Link is your online tool for keeping up to date with vehicle status, location, and more. Dive into the vehicle history, create reports, and manage alert notifications all from your desktop or mobile phone.

Specifications

- GPS Location Technology:
72 Channel Concurrent GPS/GLONASS/ Galileo
- Dimensions: 2.8 x 1.81 x 0.94" (71 x 46 x 24mm)
- Weight: 1.69 oz (48g)
- Operating Voltage: 8-36VDC
- Operating Temperature: -30° to 60°C
- Status LED: Connection (Blue)
- Mount: Plug In OBDII Port
- Certifications: FCC, ISED, CE, ACMA RCM, EMC, RoHS



678-992-5501 | sales@powertelematics.com
powertelematics.com
3025 Breckinridge Blvd, Ste 130, Duluth, GA 30096