

# PT-ModPro

## Stationary Generator Monitoring System

The PT-ModPro generator monitoring system is a fully featured solution for any stationary commercial or industrial generator and transfer switch that is Modbus compatible. The PT-ModPro is installed on the generator set, inside the enclosure. This monitor includes RS-232 and RS-485, Modbus RTU, Modbus TCP, 5 on-board Digital I/O ports, 4 Analog I/O ports and connection via Ethernet and Cellular.



➔ **Recommended Applications:**  
*Any commercial and industrial generators.*

The PT-ModPro gateway is compatible with most major generator and transfer switch brands providing extensive flexibility when selecting what conditions to monitor. The PT-ModPro allows you to dive deeper into the equipment to monitor analog values, alarms, conditions and real-time data.

The PT-ModPro gateway connects to field equipment via several connection methods: Serial RS232 and RS485 ports for Modbus RTU and Ethernet/LAN ports for Modbus TCP. On-board I/O ports allow sensors and additional equipment to be connected. The PT-ModPro can also use both Ethernet and cellular communication.

### PT-ModPro Features

- PT-ModPro Gateway - Fully Configured & Scripted
- Ethernet and Cellular Connection
- 5 Digital I/O ports and 4 Analog I/O ports
- 2 Relay Driver Outputs
- 1 On-Board Relay (NO/NC/COM)
- 8-32VDC Power
- Over-The-Air Unit Configuration and Updates
- Modbus Data Retrieval
- Customizable Alert Notifications
- Lifetime Warranty

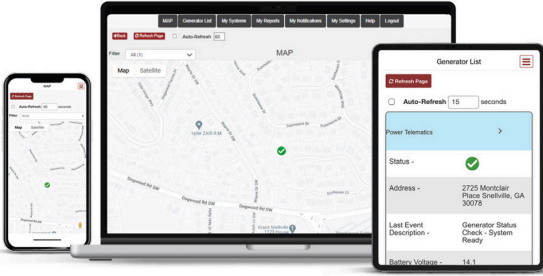
### Specifications

- **Housing:** Painted G90 Galvanized Steel
- **Mechanical dimensions:** 6" x 4.5" x 1" (152 x 114 x 25mm)
- **Weight:** 14 oz (396g)
- **Operating Temperature:** -40° to 65°C
- **Supply Voltage:** 8-32Vdc
- **Max Power Consumption:** 2.5W
- **Supply protection:** Load dump and reverse supply
- **Digital (ground) outputs:** 48V at 1A
- **Digital inputs:** 0 to 32V max, threshold at 6V
- **Analog inputs (voltage):** 32V max
- **Analog inputs (current):** 50mA max
- **Relay:** DC: 2A 30V.
- **RS232 and RS485:** Surge protected: 2000A 8/20µs maximum surge current capacity in accordance with IEC61000-4-5
- **GPS and Cell Antenna:** Surge protected: 100A 10/1000µs, 500A 8/20µs maximum surge current capacity
- **Ethernet:** Minimum 1500Vrms

# PT-ModPro

## Stationary Generator Monitoring System

### User Interface: Power Link



Power Link is your online tool for keeping up to date with generator status, activity, readiness and more. Dive into the generator history, create reports, and manage alert notifications all from your desktop or mobile phone. Power Link has a downloadable app so you can check in at any time.

### Accessory Kits

Power Telematics also offers optional accessory kits to complete and customize your monitoring experience.

Kits include:

#### Utility Voltage Detection Kit

This sensor is used to detect the presence of utility AC voltage. The sensor is placed on an insulated conductor supplying utility AC voltage to the control panel, battery charger or block heater. Designed to sense only ONE phase of AC voltage.

Additional Conditions Monitored:

- Utility Power On
- Utility Power Off
- Building Power On
- Building Power Off
- Site Without Power (If paired with the Generator Current Sensor)

#### Generator Voltage Detection Kit

This sensor is used to detect the presence of generator voltage when the generator is running. The sensor is placed on the output side of the generator breaker.

Additional Conditions Monitored:

- Generator Breaker Open
- Generator Voltage Detected

#### Generator Current Sensing Kit

This sensor is used to detect if current is present or “flowing” from the generator set. The sensor is installed/clamped on either side of the main line circuit breaker. If current is present, then the generator is supplying load to the building.

Additional Conditions Monitored:

- On Generator Power
- Return to Utility Power
- Site Without Power (if paired with the utility voltage detection kit)

#### Diesel Fuel Level Monitoring

The Ultrasonic Diesel Fuel Level Sensor is a programmable plug and play device used for diesel tanks. Using ultrasonic waves, this sensor measures fuel level for tanks up to 7’ reporting fuel level from 0-100%. Standard kit comes in 30’ cable length.

Provides Alerts for:

- Fuel Level Below 50%, 25% or 10%

#### LP Fuel Level Monitoring

The LP Tank Fuel Level monitor measures the propane fuel level in any above ground or below ground LP tank. The monitor connects to any “Remote Ready” fuel level gauge and measures the percentage of fuel in the tank. We also stock replacement remote ready gauges for older tanks. Low fuel level alerts can be customized for different levels and email notifications can even be sent to the customer’s propane supplier.



678-992-5501 | [sales@powertelematics.com](mailto:sales@powertelematics.com)

[powertelematics.com](http://powertelematics.com)

3025 Breckinridge Blvd, Ste 130, Duluth, GA 30096