

PTM-ModPro

Mobile Generator and Trailer Tracking System

The PTM-ModPro generator monitoring system is a fully featured solution for any modbus compatible portable/towable generator. The PTM-ModPro is installed on the generator set, inside the enclosure. This monitor includes RS-232 and RS-485, Modbus RTU, Modbus TCP, 5 on-board Digital I/O ports, 4 Analog I/O ports and connection via Ethernet and Cellular.



➔ **Recommended Applications:**
Any portable/towable generator.

The PTM-ModPro gateway is compatible with most major generator and transfer switch brands providing extensive flexibility when selecting what conditions to monitor. The PTM-ModPro allows you to dive deeper into the equipment to monitor analog values, alarms, conditions and real-time data.

The PTM-ModPro gateway connects to field equipment via several connection methods: Serial RS232 and RS485 ports for Modbus RTU and Ethernet/LAN ports for Modbus TCP. On-board I/O ports allow sensors and additional equipment to be connected. The PTM-ModPro can also use both Ethernet and cellular communication.

PTM-ModPro Features

- PTM-ModPro Gateway - Fully Configured & Scripted
- Cellular Connection
- Roof-Mounted Antenna
- 5 Digital I/O ports and 4 Analog I/O ports
- 2 Relay Driver Outputs
- 1 On-Board Relay (NO/NC/COM)
- 8-32VDC Power
- Over-The-Air Unit Configuration and Updates
- Modbus Data Retrieval
- Customizable Alert Notifications
- Lifetime Warranty

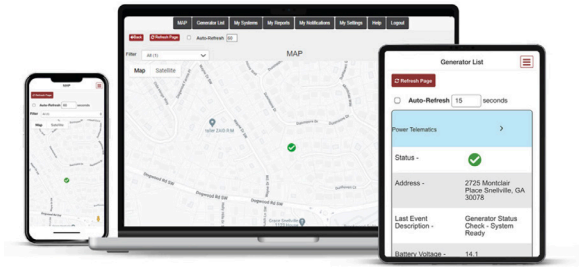
Specifications

- **Housing:** Painted G90 Galvanized Steel
- **Mechanical dimensions:** 6" x 4.5" x 1" (152 x 114 x 25mm)
- **Weight:** 14 oz (396g)
- **Operating Temperature:** -40° to 65°C
- **Supply Voltage:** 8-32Vdc
- **Max Power Consumption:** 2.5W
- **Supply protection:** Load dump and reverse supply
- **Digital (ground) outputs:** 48V at 1A
- **Digital inputs:** 0 to 32V max, threshold at 6V
- **Analog inputs (voltage):** 32V max
- **Analog inputs (current):** 50mA max
- **Relay:** DC: 2A 30V.
- **RS232 and RS485:** Surge protected: 2000A 8/20µs maximum surge current capacity in accordance with IEC61000-4-5
- **GPS and Cell Antenna:** Surge protected: 100A 10/1000µs, 500A 8/20µs maximum surge current capacity
- **Ethernet:** Minimum 1500Vrms

PTM-ModPro

Mobile Generator and Trailer Tracking System

User Interface: Power Link



Power Link is your online tool for keeping up to date with generator status, activity, readiness and more. Dive into the generator history, create reports, and manage alert notifications all from your desktop or mobile phone. Power Link has a downloadable app so you can check in at any time.

Accessory Kits

Power Telematics also offers optional accessory kits to complete and customize your monitoring experience.

Kits include:

Generator Voltage Detection Kit

This sensor is used to detect the presence of generator voltage when the generator is running. The sensor is placed on the output side of the generator breaker.

Additional Conditions Monitored:

- Generator Breaker Open
- Generator Voltage Detected

Generator Current Sensing Kit

This sensor is used to detect if current is present or “flowing” from the generator set. The sensor is installed/clamped on either side of the main line circuit breaker. If current is present, then the generator is supplying load to the building.

Additional Conditions Monitored:

- On Generator Power
- Return to Utility Power

Diesel Fuel Level Monitoring

The Ultrasonic Diesel Fuel Level Sensor is a programmable plug and play device used for diesel tanks. Using ultrasonic waves, this sensor measures fuel level for tanks up to 7' reporting fuel level from 0-100%. Standard kit comes in 30' cable length.

Provides Alerts for:

- Fuel Level Below 50%
- Fuel Level Below 25%
- Fuel Level Below 10%



678-992-5501 | sales@powertelematics.com

powertelematics.com

3025 Breckinridge Blvd, Ste 130, Duluth, GA 30096